

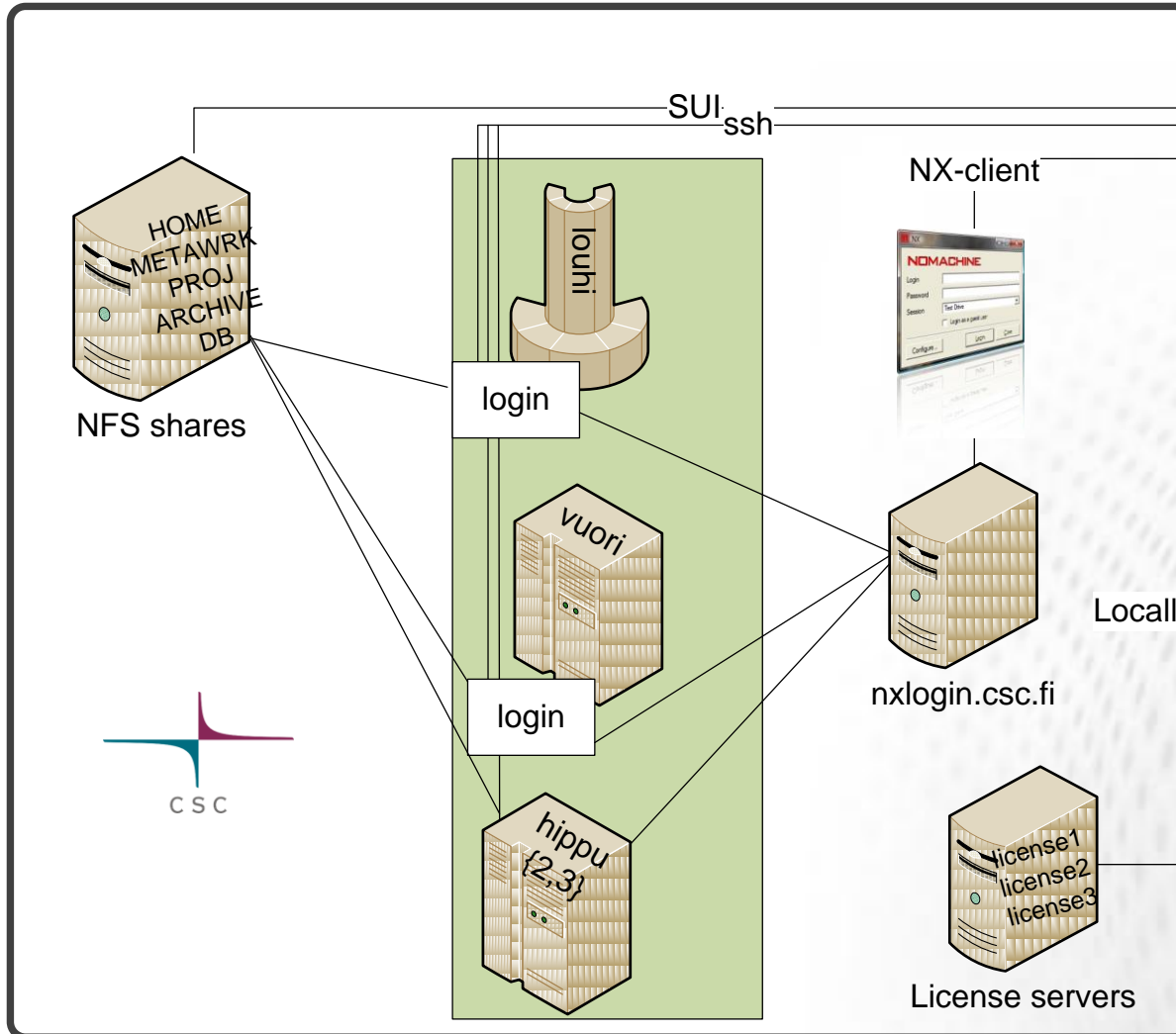


Introduction to CSC Computing Environment

How to connect

How to access CSC's computers via the shell
and the web

The complete picture



Usually you have a **firewall** on your side of the connection: nothing CSC can do

3 main ways to connect:

1. Direct SSH connection
2. Using remote desktop (NX)
3. Using web: SUI

Direct SSH connection – UNIX/Linux



- From **UNIX/Linux/Darwin** systems using `ssh` command
 - Use `-X` option to enable graphics to be tunneled

```
➤ ssh -X yourid@vuori.csc.fi
```

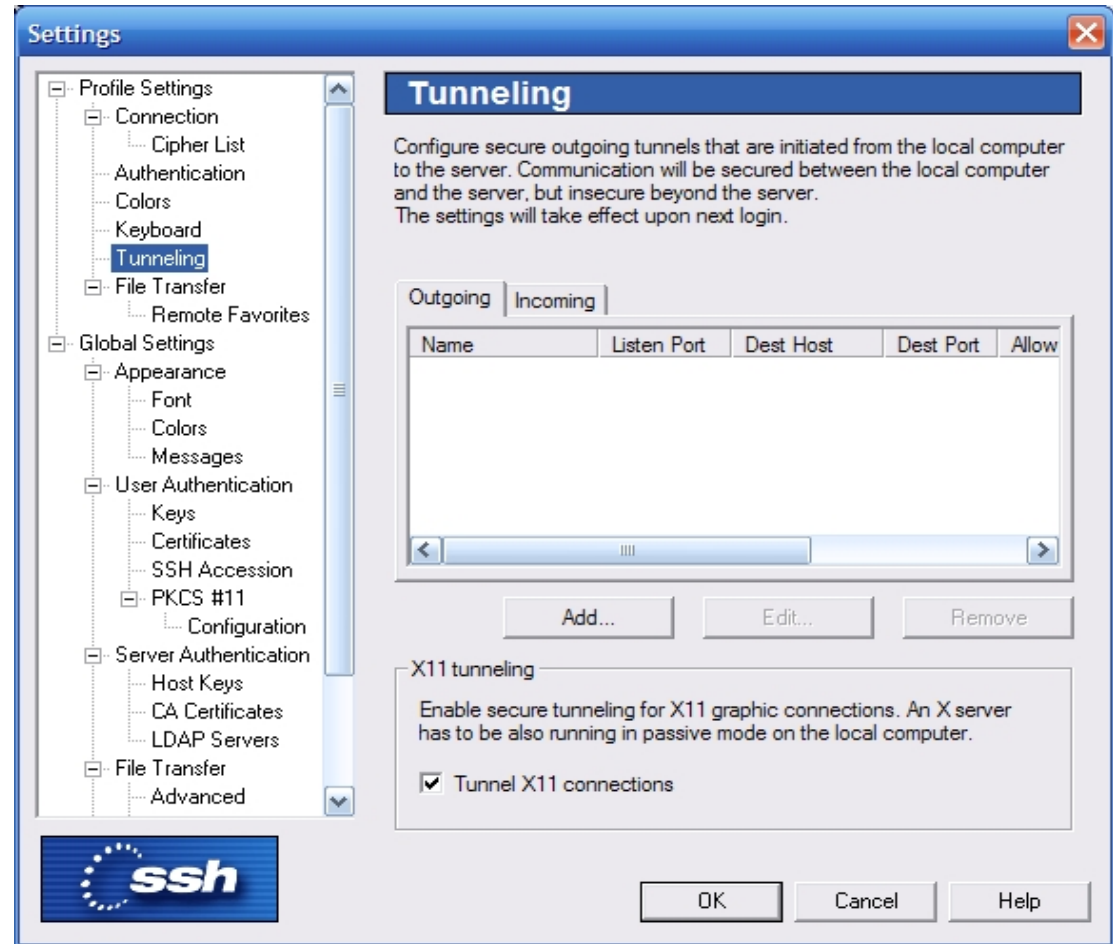
```
➤ ssh -l yourid -X vuori.csc.fi
```

```
$ ssh yourid@vuori.csc.fi
Last login: Sun Aug 21 21:45:58 2011 from vpn16-132.csc.fi
Q-[Welcome]-----Q
!   CSC - Tieteen tietotekniikan keskus - IT Center for Science   !
!       Vuori - HP BL465c G6 Cluster - RHEL5.4 / Centos 5.4     !
...
```

Direct SSH connection - Windows



- From **Windows** systems using ssh client program¹⁾
- Needs X11 emulator for displaying graphics²⁾

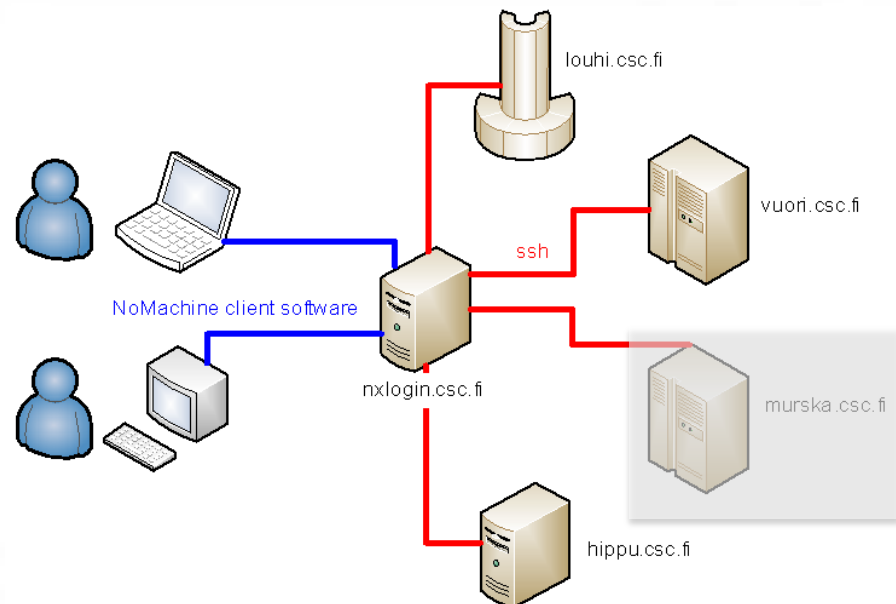


¹⁾ for instance OS solution [PuTTY](#) ²⁾ for instance OS solution [Xming](#)

Remote Desktop: NX – client/server

➤ NX remote desktop is fast

- just transfers (change of) pixels
- Adjustable to low bandwidths
- Recommended for future connections to Kajaani servers



➤ [CSC info page](#)

➤ Free [download](#) of client software

Remote Desktop: NX – client/server

- Instructions on CSC's Scientists user interface
- Prerequisites:
 - User account on CSC server
 - Installed client
 - Needs special key to be set during installation



File transfer

- From **UNIX/Linux** systems using scp command

```
> scp [-r] name yourid@vuori.csc.fi:'/path/on/vuori'
```

- From **Windows** systems using a certain program
- Via Scientist's User Interface (see later)